

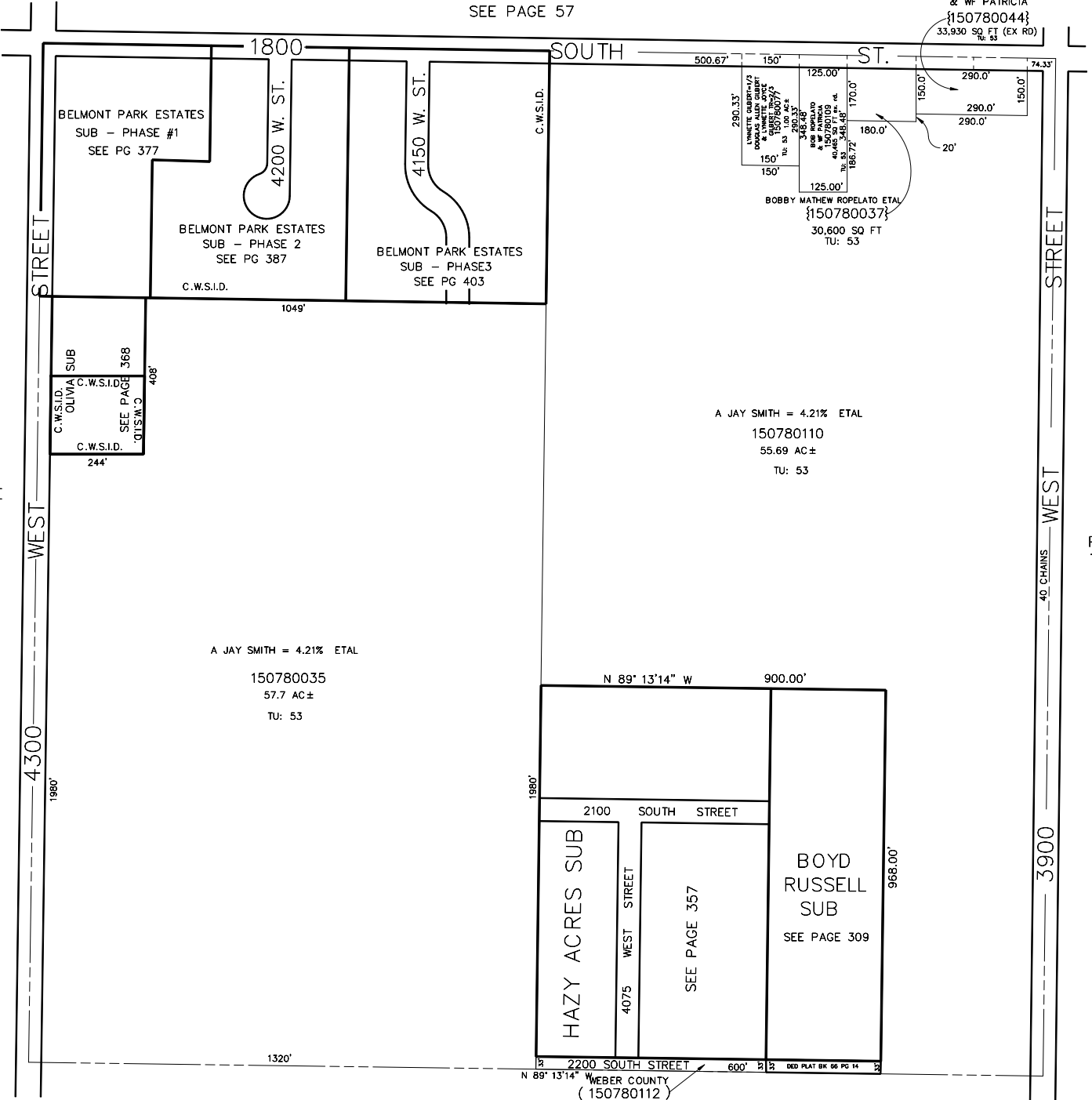
N.W. 1/4
SECTION 28, T.6N., R.2W., S.L.B. & M.

IN WEBER COUNTY
SCALE 1" = 200'

TAXING UNIT: 53,377

SEE PAGE 57

BOB ROPELATO
& WF PATRICIA
{150780044}
33,930 SQ FT (EX RD)
TU: 53



SEE PAGE 80

SEE PAGE 78-1

SEE PAGE 78-3

WEBER COUNTY
(150780112)
19,800 SQ FT
TU: 53